

UT Research Campus Station

UT Research Campus station is located in the center of the University of Texas's JJ Pickle Research Campus. The campus is home to several research departments and laboratories for geology, computer technology, engineering, archaeology, and physics, among others. Outside the campus, a mix of manufacturing and showrooms, service retail, a few fast food restaurants, and government offices line this portion of Burnet Road. The Domain is north on West Braker Lane. The Shops at Arbor Walk are to the west, but not accessible as the Union Pacific railroad tracks and a high wall prohibit access. JJ Pickle is well-maintained with wide boulevards, sidewalks, and green space, though facilities are spread out. Access to Burnet Road and West Braker Lane is limited; these roads are high-speed arterials with limited sidewalks, bike infrastructure, and have virtually no shade. Pedestrian crosswalks on Burnet Road are not present at all signals. Businesses are spread out and have large driveways. These issues present access concerns for pedestrians and bicyclists.

Station Features...

- Digital real-time information display
- Shelter/Bench/Destination Map/Lighting
- Free bike racks (2)

System Connections...

- MetroBus 3, 240, 383, 392, 466
- Other last mile: Car2Go area (campus only)

Access to...

1. J.J. Pickle Research Campus/UTA
2. The Domain
3. Texas Association of Local Health Officials

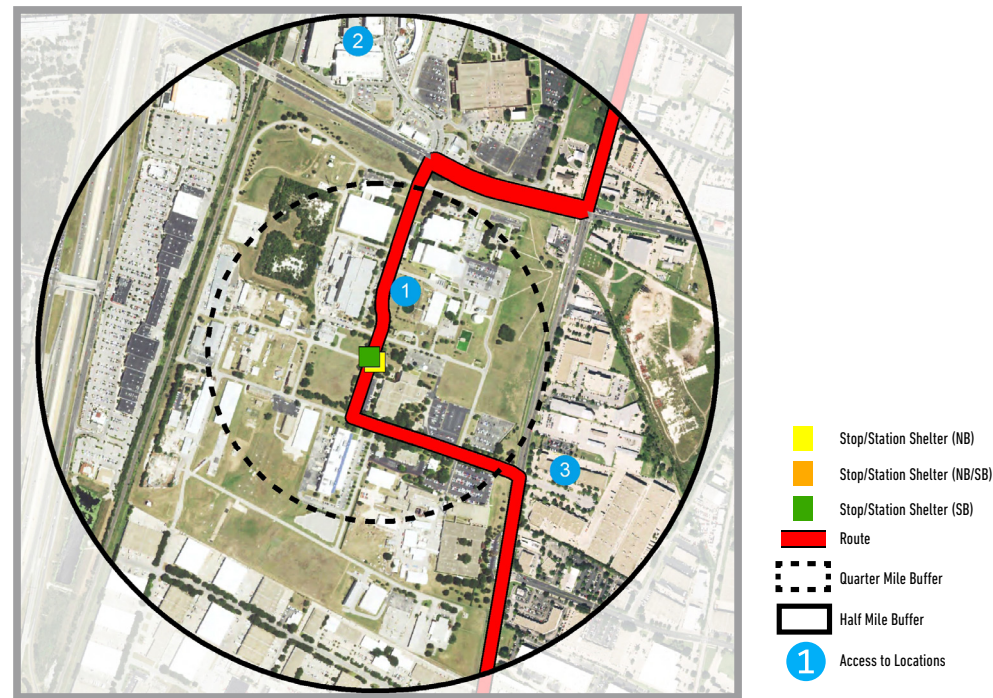
Missing Elements...

- Compact mixed-use development
- Public realm improvements, including shade, street furniture, pedestrian-scale lighting
- Pedestrian and bicycle connections and enhanced crossings
- Wayfinding



Ridership/Service

Weekday Ridership (April 2016)	126 on / 131 off
Saturday Ridership (April 2016)	18 on / 23 off
Sunday Ridership (April 2016)	24 on / 44 off
Target Weekday Ridership	125-150 on
Level of Service	15 min peak/30 min off-peak



Demographics

Population (2010)	100
Population (2040)	1,320
Population Density (2010)	100 ppl / sq. mile
Employment (2010)	4,430
Employment (2040)	15,140
Employment Density (2010)	5,600 emp / sq. mile
Households (2010)	74
Households (2040)	680
Median HH Size (2010)	0.97
Housing Units (2010)	560
Affordable Housing (2013)	0
Median HH Income (2010)	\$37,900
Zero Car HH (2014)	0
Millennial Population Age 25-34 (2010)	300
Senior Population Age 65+ (2010)	10

UT Research Campus Station | MetroRapid 803

FACTS	Segment	North
	Service Open	2014
	Target Weekday Ridership	125-150
	Profile Date	2016

PLACE TYPOLOGY	Special Destination
-----------------------	----------------------------

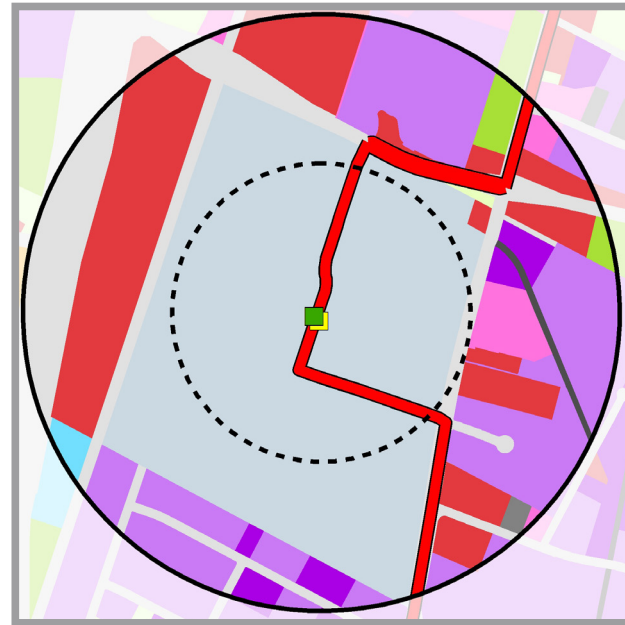
READINESS SCORE	Emerging
------------------------	-----------------

READINESS METRICS	Connectivity	Medium
	Market Strength	Medium
	Land Availability	Medium
	Government Support	Medium

NEEDS	Safety and security <ul style="list-style-type: none"> ▪ Lighting needed on sidewalks and to illuminate crosswalks on Burnet Road and Braker Lane ▪ Enhanced lighting on campus for safety, visibility for pedestrian paths and bicycle routes 	(Re)development opportunities <ul style="list-style-type: none"> ▪ Redevelopment potential east of campus, currently warehouse showroom, industrial ▪ Infill potential on campus (internal only)
	Streetscape improvements <ul style="list-style-type: none"> ▪ Intersection improvements on Burnet Road and Braker Lane to better facilitate all travel modes ▪ Pedestrian-scale lighting on all sidewalks leading to station and at crossings, on campus and on connecting streets ▪ Shade trees ▪ Improved bicycle access leading to the campus ▪ Traffic calming, increasing pedestrian/bike safety at crossings leading into campus 	Station amenities <ul style="list-style-type: none"> ▪ Shade: trees or shade structure ▪ Pedestrian-scale lighting, especially southbound ▪ Improved pedestrian and bicycle connections (NB)
		Other amenities <ul style="list-style-type: none"> ▪ Wayfinding to note areas within a "10 minute walk", nearby services within walk from campus
		Public/placemaking/art opportunity <ul style="list-style-type: none"> ▪ Limited placemaking opportunity (internal use only)

CATALYST PROJECTS	<ul style="list-style-type: none"> ▪ North Lamar Blvd and Burnet Rd Corridor Improvements (Public Works)
--------------------------	---

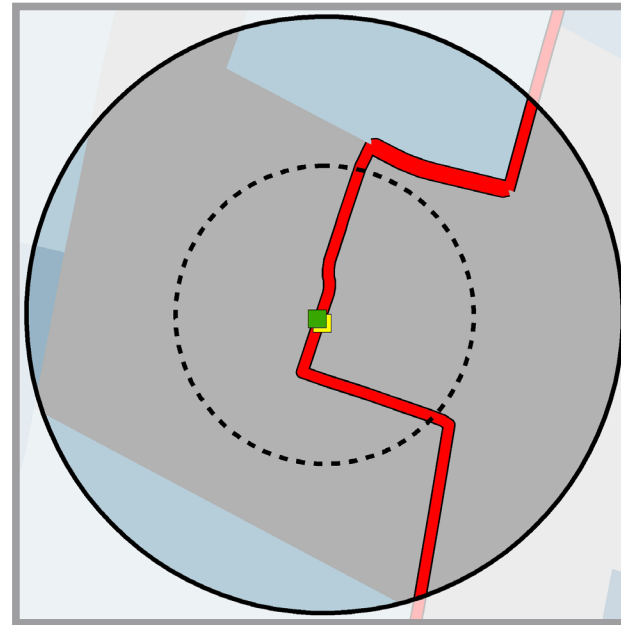
Land Use



The predominant land uses in the 1/2 mile station area include: educational, commercial, manufacturing, and streets and roads.

- | Land Use | |
|-------------------------|------------------------------|
| Agricultural | Miscellaneous Industrial |
| Apartment/Condo | Mixed Use |
| Aviation/Facilities | Mobile Homes |
| Campgrounds | Office |
| Cemeteries | Parking |
| Commercial | Parks/Greenbelts |
| Common Areas | Preserves |
| Cultural Services | Railroad Facilities |
| Duplexes | Resource Extraction (Mining) |
| Educational | Retirement Housing |
| Golf Courses | Semi-institutional Housing |
| Government Services | Single Family |
| Group Quarters | Streets & Roads |
| Hospitals | Threplex/Fourplex |
| Landfills | Transportation Facilities |
| Large-lot Single Family | Undeveloped |
| Manufacturing | Utilities |
| Marinas | Warehousing |
| Meeting & Assembly | Water |

Population Density



Average population density in the 1/2 mile station area is 100 residents per square mile.

- | Persons Per SqMi |
|------------------|
| 0 |
| >0 and <1 |
| >1 and <2 |
| >2 and <3 |
| >3 and <4 |
| >4 and <5 |
| >5 and <60 |

Infrastructure-Roads



- Stop/Station Shelter (NB)
- Stop/Station Shelter (NB/SB)
- Stop/Station Shelter (SB)
- Bicycle Path
- Route
- Sidewalk
- Street

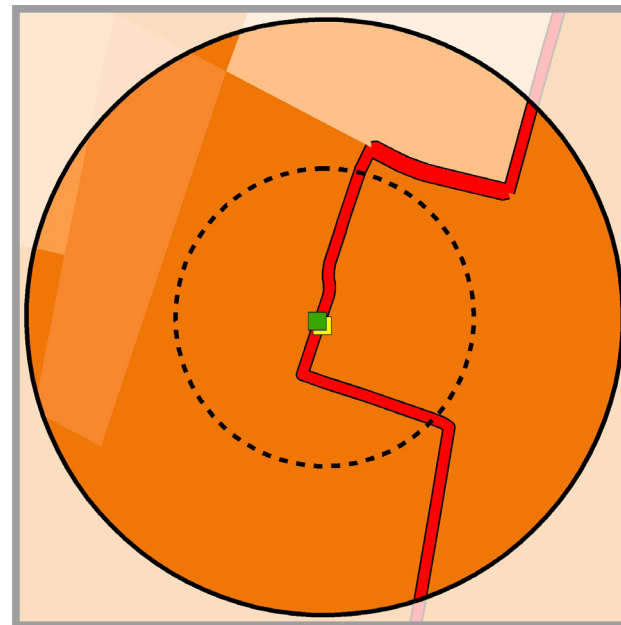
Parcels and Buildings



The 1/2 mile station area is estimated to contain 3.57 million built square feet.

- Stop/Station Shelter (NB)
- Stop/Station Shelter (NB/SB)
- Stop/Station Shelter (SB)
- Route
- Quarter Mile Buffer
- Half Mile Buffer

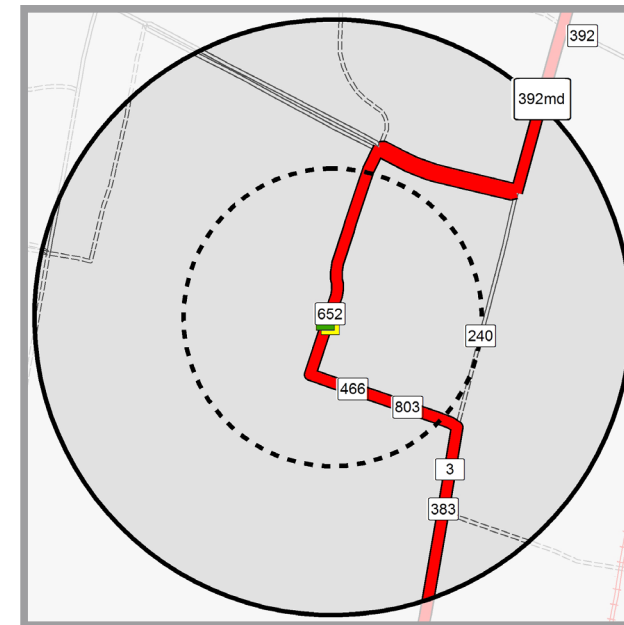
Employment Density



Average employment density in the 1/2 mile station area is 5,600 employees per square mile.

- | Employment Per SqMi |
|---------------------|
| 0 |
| >0 and <1 |
| >1 and <2 |
| >2 and <3 |
| >3 and <4 |
| >4 and <5 |
| >5 and <42 |

Infrastructure-Transit



- Stop/Station Shelter (NB)
- Stop/Station Shelter (NB/SB)
- Stop/Station Shelter (SB)
- Route
- Quarter Mile Buffer
- Half Mile Buffer



Interior campus looking east



Commons Learning Center



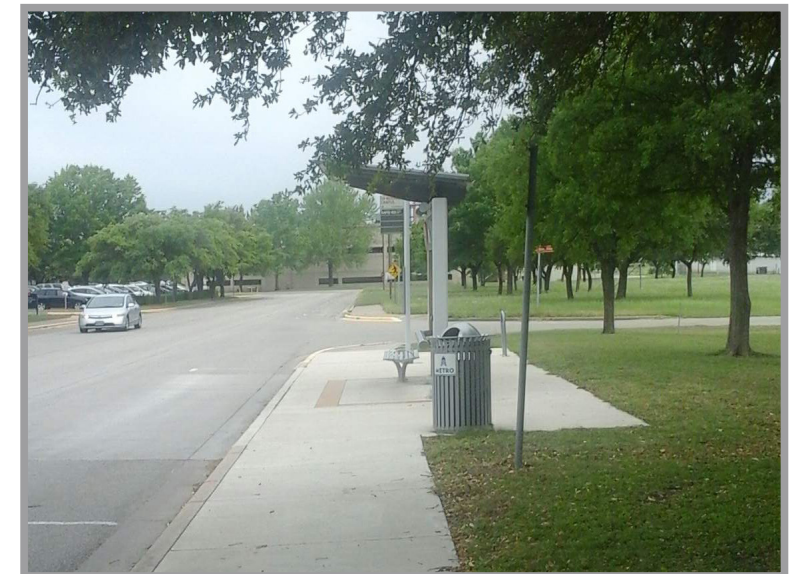
Interior campus



UT Research station (NB) looking south



Interior campus looking south



UT Research station (SB) looking south