

RIDING BASICS

KEEP YOUR CHANGE

Your ACC Green Pass and ACC ID are all you need - most services are FREE with your Green Pass. When riding Rail, show your Green Pass to a fare inspector. Green Pass riders must show an ACC ID card when asked.

Green Passes are available to students **only** upon their request to qualified students, faculty, and staff. **Prefer digital? Add your Green Pass to the Umo app and scan the digital pass on your phone at the scanner while boarding.**



IT'S ALL YOURS

Riding CapMetro for free allows you to spend your money on enjoying life both on and off campus. Our range of services includes **buses, rail, and more!** Unlock what Austin has to offer like inspiring study spots, new restaurants, concerts, downtown internships and beyond.

WHENEVER YOU NEED US

Up late "studying"? Night Owl buses run from midnight until 3 a.m. and CapMetro Rapid runs until about midnight seven days a week all year round. Look for the 480-level routes in the Trip Planner to find the best way home from your late-night haunts.



HOW TO PLAN YOUR TRIP

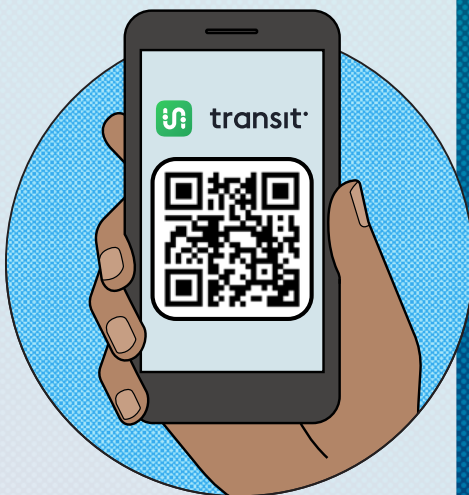
TRIP

Download the Transit app or visit capmetro.org to plan your trip. It's easy to ride CapMetro with these on-the-go travel tools:

- Trip Planner
- Real-time location tracking with GO
- Schedules & Maps
- Service Alerts

Start by entering your destination, an intersection (like 2nd/Congress) or a Stop ID, and you're ready to freely move about Austin.

And don't forget to sign up for CapMetro Alerts to receive service notifications about your specific bus route: capmetro.org/alerts



TOP 20

PLACES TO GO, THINGS TO SEE & STUFF TO DO ON CAPMETRO



ROUTES TO POPULAR SPOTS

A Barton Springs 30	K North Loop 1 7
B The Domain 3 466 803	L The Triangle 1 656 801
C SoCo 1 801	M Lamar Union 3 803
D 6th Street 1 2 3 4 5 7 10 20 30 801 803 RL	N Auditorium Shores & the Long Center 1 7 10 20 30 801
E Coffee & Dining on Lake Austin 18	O Mueller Hangouts 10
F State Capitol 1 3 5 7 10 20 30 663 801 803	P Eastside Eats 2 4 672 RL
G Bats Under the Congress Ave Bridge 1 7 20 801	Q Honky-Tonk Dancing on South Lamar 3 300 803
H Q2 Stadium Austin FC 3 466 803 RL	R Hyde Park Hangouts 1 7 656 801
I S. 1st Street Food Trailers 10	S Burnet Road Thrifting 3 803
J Boardwalk Trail & Paddle Boarding at Ladybird Lake 7 20	T Central Library 3 803

RL CapMetro Rail Red Line

600s UT Shuttle Routes
Operate on the UT academic calendar schedule. Check hours of operation: capmetro.org/ut-shuttles

CapMetro

512.474.1200 | capmetro.org

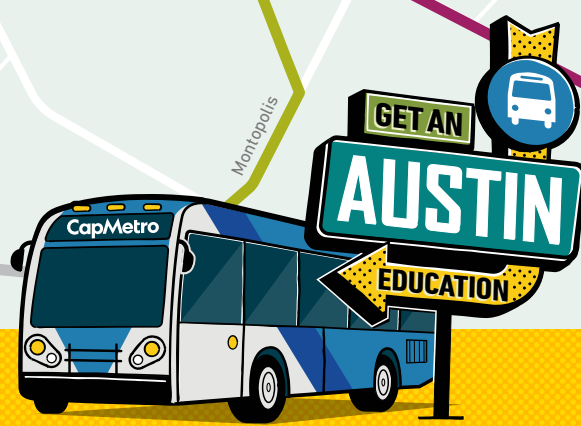
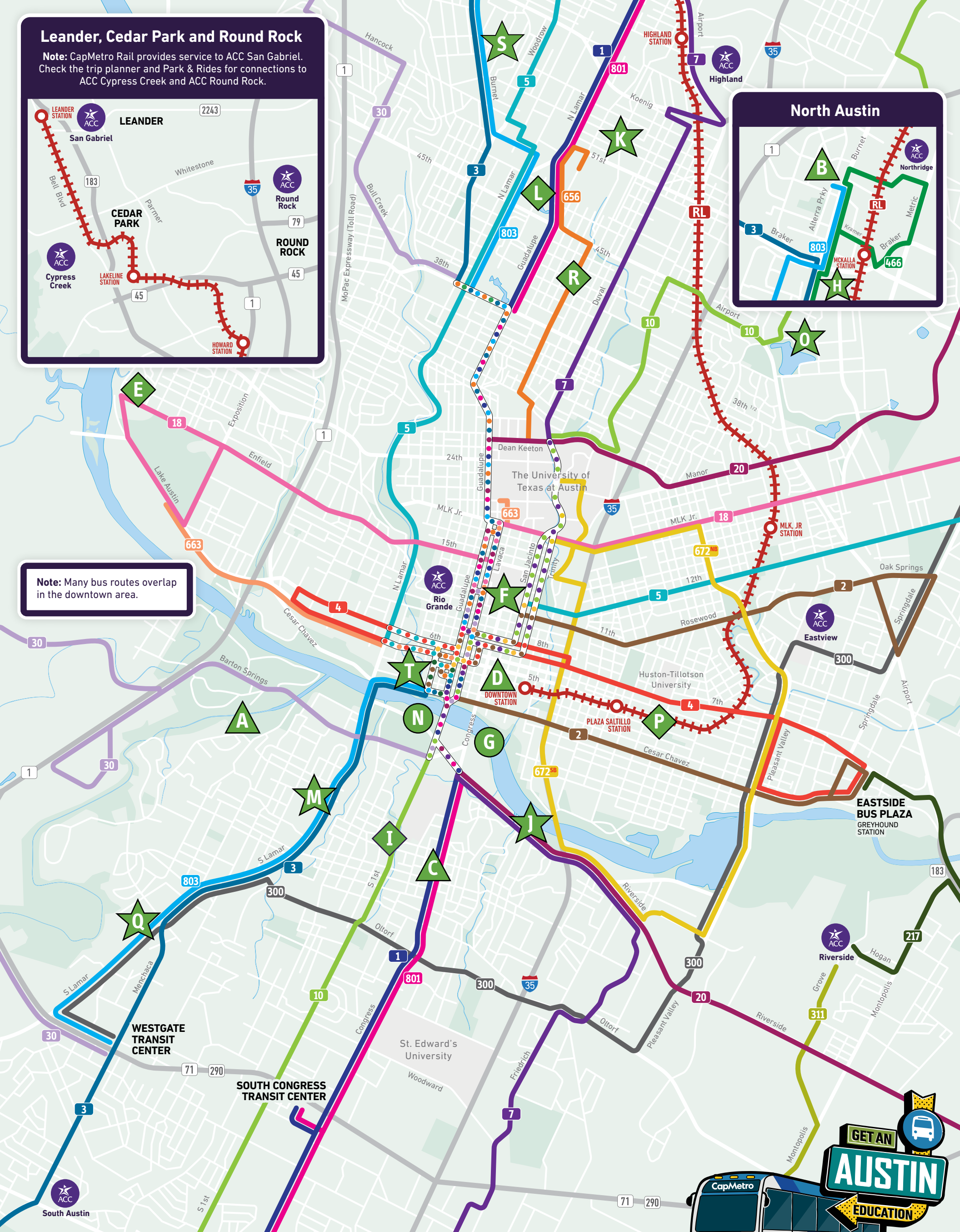


Leander, Cedar Park and Round Rock

Note: CapMetro Rail provides service to ACC San Gabriel. Check the trip planner and Park & Rides for connections to ACC Cypress Creek and ACC Round Rock.



Note: Many bus routes overlap in the downtown area.



- | | | |
|---|---|--------------------------------------|
| A Barton Springs | H Q2 Stadium Austin FC | O Mueller Hangouts |
| B The Domain | I S. 1st Street Food Trailers | P Eastside Eats |
| C SoCo | J Boardwalk & Paddleboard at Ladybird Lake | Q Honky-Tonk Dancing on Lamar |
| D 6th Street | K North Loop | R Hyde Park Hangouts |
| E Coffee & Dining on Lake Austin | L The Triangle | S Burnet Road Thrifting |
| F State Capitol | M Lamar Union | T Central Library |
| G Bats Under the Congress Ave Bridge | N Auditorium Shores & the Long Center | |
| | | ▲ Austin Essentials |
| | | ◆ Food & Bevs |
| | | ★ Fun-tivities! |
| | | ● Events |

* This map does not fully show the entirety of CapMetro's routes, please see our system map for more connections.